

## Specifications

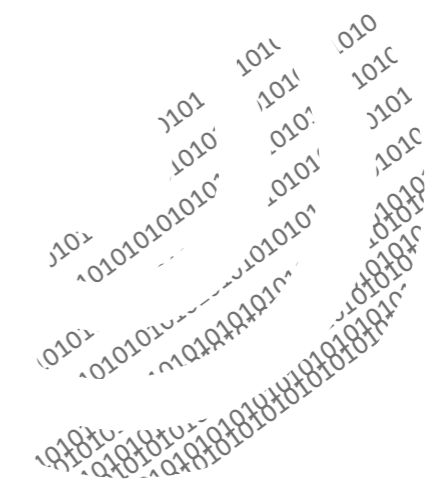
General	
Frequency Range	UHF: 400-470MHz VHF: 136-174MHz
Channel Capacity	48
Zone Capacity	3
Channel Spacing	25/12.5KHz
Operating Voltage	7.4V
Battery	1500mAh (Li-Ion) 2000mAh (Li-Ion)
Battery Life (5/5/90)	Analog/Digital: 12/16 hours (1500mAh) 16/22 hours (2000mAh)
Weight	270g
Dimensions	112×54×28mm
Frequency Stability	±0.5ppm
Antenna Impedance	50Ω
Receiver	
Sensitivity (Digital)	0.22μV / BER 5%
Sensitivity (Analog)	0.22μV (Typical) (12dB SIN AD) 0.4μV (20dB SIN AD) 0.22μV (12dB SIN AD)
Adjacent Selectivity	TIA-603 60dB @ 12.5KHz/70dB @ 25KHz
	ETSI 60dB @ 12.5KHz/70dB @ 25KHz
Spurious Response Rejection	TIA-603 70dB @ 12.5/25KHz
	ETSI 70dB @ 12.5/25KHz
Inter-modulation	TIA-603 70dB @ 12.5/25KHz
	ETSI 65dB @ 12.5/25KHz
Hum & Noise	40dB @ 12.5KHz 45dB @ 25KHz
Rated Audio Power Output	0.5W
Rated Audio Distortion	≤3%
Audio Response	+1 ~ -3dB
Conducted Spurious Emission	<-57dBm

Transmitter	
RF Power Output	VHF High power: 5W VHF Low power: 1W UHF High power: 4W UHF Low power: 1W
FM Modulation	11K0F3E @ 12.5KHz 16K0F3E @ 25KHz
4FSK Digital Modulation	12.5KHz Data Only: 7K60FXD 12.5KHz Data & Voice: 7K60FXW
Conducted/Radiated Emission	-36dBm <1GHz, -30dBm >1GHz
Modulation Limiting	±2.5KHz @ 12.5KHz ±5.0KHz @ 25KHz
FM Hum & Noise	40dB @ 12.5KHz 45dB @ 25KHz
Adjacent Channel Power	60dB @ 12.5KHz, 70dB @ 25KHz
Audio Response	+1 ~ -3dB
Audio Distortion	≤3%
Digital Vocoder Type	AMBE+2™
Digital Protocol	ETSI-TS102 361-1,-2,-3
New Software TDMA Direct Mode removed---if you need it, please contact us	
Operating Temperature	-30°C ~ +60°C
Storage Temperature	-40°C ~ +85°C
ESD	IEC 61000-4-2 (Level 4) ±8kV (Contact) +15kV (Air)
Dustproof & Waterproof	IP55 Standard
Humidity	Per MIL-STD-810 G Standard
Shock & Vibration	Per MIL-STD-810 G Standard

PD40X, X=0, 2, 5, 6 or 8, model number varies geographically. For details, please contact our regional sales representatives.  
All specifications are subject to change without notice due to continuous development.

Digital voice, louder and clearer

Analog & Digital Mixed Channel



## Features

Private call, Group call and All call

Small, Sleek, Light

In digital mode, the radio operates up to 16 hours under a duty cycle of 5-5-90 @1500mAh.

IP55 & MIL-STD-810 G standards

Pre-programmed Text Message

Support one touch pre-programmed text messages and voice calls.

Dual Mode (Analog & Digital) ensures a smooth migration from analog to digital.

Voice-operated Transmit (VOX) allows you to trigger the voice transmission by voice directly.

Analog & Digital Mixed Channel supports automatically detecting signal type and switching between analog and digital mode.

Multi-site Roam, Priority Interrupt, Basic encryption, Radio Enable/Disable

Optional (charge) : Pseudo Trunk, Emergency

Superior Audio

Analog &  
Digital Mixed Channel

Dust- & water-proof (IP54)

## Highlights

- Digital Voice, Louder and Clearer
- Double Channel Capacity
- Analog & Digital Mixed Channel
- Easy Operation
- Durable, IP55 & MIL-STD-810 G standards
- Affordable



## Target Markets

### Construction

At noisy construction site, a radio with good voice quality and reliable use can make all the difference.

### Warehouse

A durable battery supports full shifts without recharge.

### Security

Steady wireless signal receiving improves security work performance and reduces loss.

### Factory

Military standard and good dust-proof & water-proof rating (IP54) protect the radio from damage in complex environment of factory.

## Standard



Li-ion battery  
(1500mAh)  
BL1504



Belt clip  
BC08



General MCU Rapid-rate Charger  
(for Li-Ion/Ni-MH batteries)  
CH10A07

Whip antenna



Switching Power Adapter



Hand strap

## Options

